

HGP Open Part Number	Schematic Drawing #	Approx Weight (LBS)
HGP0008CW0S0000	31663	41
HGP0008CW0C0000	31663-1	45
HGP0008CW0S1000	31663-PQ1	43
HGP0008CW0C1000	31663-PQ	48

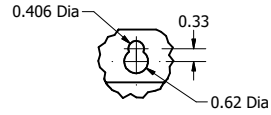
HGP Part Number	HorsePower (HP)	kVar	Harmonic	Voltage (V)	Hz.	Phase
HGP0008CW----	7.5	2.04	5th	600	60	3

HGP Enclosed Type 1 Part Number	Schematic Drawing #	Approx Weight (LBS)
HGP0008CW1S0000	31663	66
HGP0008CW1C0000	31663-1	70
HGP0008CW1S1000	31663-PQ1	68
HGP0008CW1C1000	31663-PQ	73

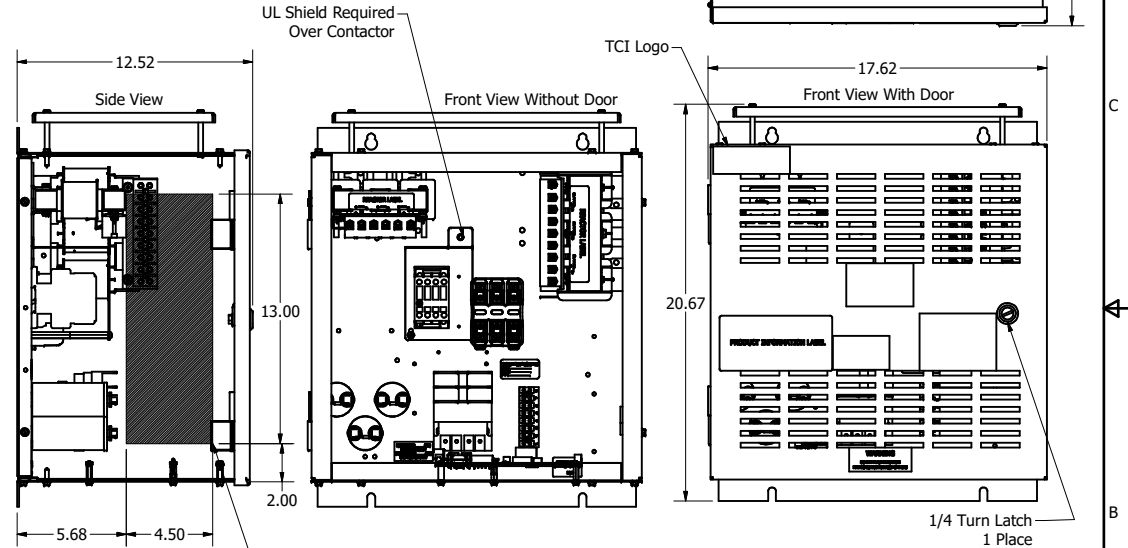
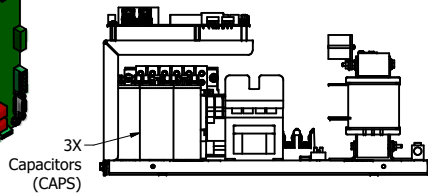
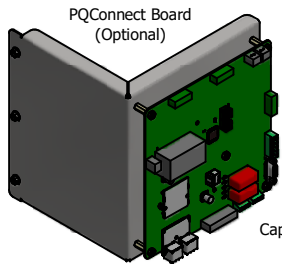
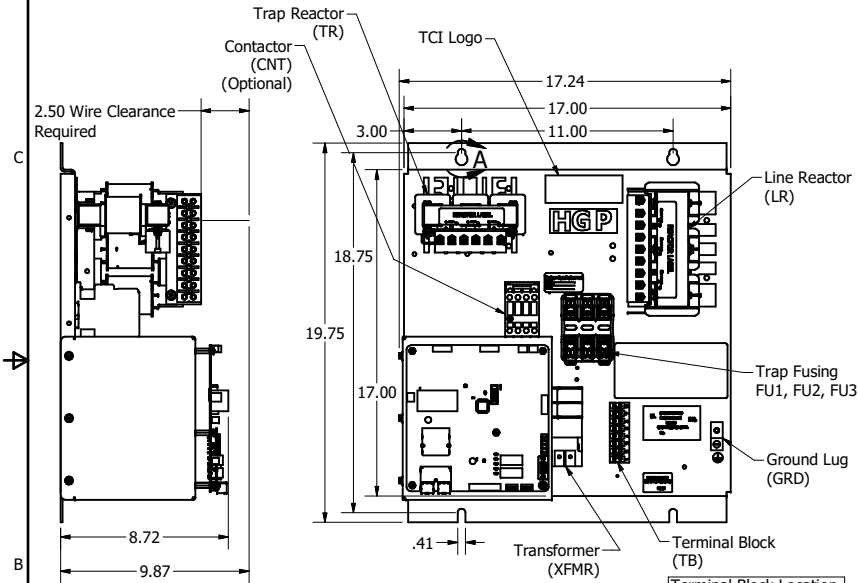
Note: For Torque Information
See IOM Manual

Customer Connections.
L1, T1, L2, T2, L3, T3
Wire Range: 1 AWG to 22 AWG.

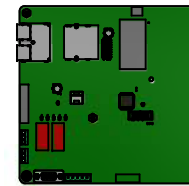
Ground Lug
Wire Range: 1/0 to 14 AWG.



DETAIL A
Keyslot



Suggested Area,
For Customer Wire Entry
And Exit Location



PQConnect Board
Mounted on Bottom
OF Enclosure.
(Optional)

Note: Customer is responsible
for proper cooling of filter
components on open panels.
Capacitors Maximum Ambient 50°C.

Components	HGP0008CW----			
	0S0000/1S0000	0C0000/1C0000	0S1000/1S1000	0C1000/1C1000
Line Reactor (LR)	X	X	X	X
Trap Reactor (TR)	X	X	X	X
Capacitor (Cap)	X	X	X	X
Trap Fusing, FU1, FU2, FU3	X	X	X	X
Contactor (CNT)		X		X
Transformer (XFMR)		X	X	X
XFMR Fusing, FU4, FU5		X	X	X
PQConnect Board			X	X

TCI, LLC CLAIMS PROPRIETARY RIGHTS IN THE MATERIAL HEREIN DISCLOSED. IT IS SUPPLIED WITHOUT PREJUDICE TO ANY PATENT RIGHTS OF TCI AND MAY NOT BE REPRODUCED OR USED TO MANUFACTURE ANYTHING SHOWN THEREIN WITHOUT WRITTEN PERMISSION FROM TCI.

REV	DATE	BY
A	06/17/19	JHM
NO		

TOLERANCES (EXCEPT AS NOTED)
DECIMAL
.XX ± .25
.XXX ± .10
FRACTIONAL
± 1/16
ANGULAR
± 1°

Material(s) Shall be RoHS Compliant			
TCI W132 N10611 Grant Drive Germantown, WI 53022			
HarmonicGuard Passive HGP, 7.5HP, 600/3/60, Open and Type 1			
DES BY: JHM	DATE: 06/17/19	108181DG	
SCALE:	DRAWN:	REV:	SHT 1 OF 1